

# 小蜉属一新种<sup>①</sup>

## (蜉蝣目:小蜉科)

吴钿 归鸿  
(生物系)

**摘要** 本文报导采自江苏宜兴的小蜉属(*Ephemerella* Walsh)一新种,宜兴小蜉(*Ephemerella Yixingensis* sp. nov.)并对新种形态特征作了详细描述。

**关键词** 蜉蝣目,小蜉科,小蜉属,新种。

宜兴小蜉,新种 *Ephemerella Yixingensis* sp. nov. (图 1—12)

### 1 雄成虫(酒精保存)

体长 5—6mm,淡黄褐色,复眼大,两复眼在头部背面相接触,上复眼桔黄色,下复眼黑色。胸部深黄褐色,前翅长 5.5—6.2mm,透明,Sc 脉和 R 脉较粗壮,翅痣区色较暗,该区横脉交接呈网状(图 1)。后翅长 1.5—1.6mm,C 脉近基部有一突起(图 2—3)。足淡黄褐色,前足几与体等长,腿节、胫节、跗节之比为 2.7:4.4:3.5,跗节 5 节,其长度排列顺序为 2,3,4,5,1(图 4)。后足较短,腿节、胫节、跗节之比为 2.2:2.6:1.4(图 5)。跗节 4 节,其长度排列顺序为 4,2,1,3(图 6)。爪不相似,均为一尖一钝。腹部细长,第 1—8 节淡黄褐色,第 9—19 节深黄褐色,背板和腹板两侧均具有褐色纵条纹(图 7)。

外生殖器:淡黄褐色,尾铗三节,基节短而宽,第二节最长,第三节略长于基节。阳茎叶端部左右分开,外缘略尖,两叶间呈“V”形凹陷,基部愈合,阳茎叶背腹面均有刺,背面 7 根,腹面 24 根(图 8)。尾丝三根,均比体长,中尾丝略长于侧尾须。

### 2 雌成虫(酒精保存)

体长 5—6.2mm,体色与雄成虫相似。前翅长 5.5—6.5mm。后翅长 1.6mm。前足腿节、胫节、跗节之比为 1.8:2.8:1.5(图 9)。跗节 4 节,其长度排列顺序为 4,1=2,3(图 10)。后足腿节、胫节、跗节之比为 3.4:3.3:1.2(图 11)。跗节 4 节,排列顺序为 4,1,2,3(图 12)。爪均为一尖一钝。

### 3 图版说明

宜兴小蜉,新种

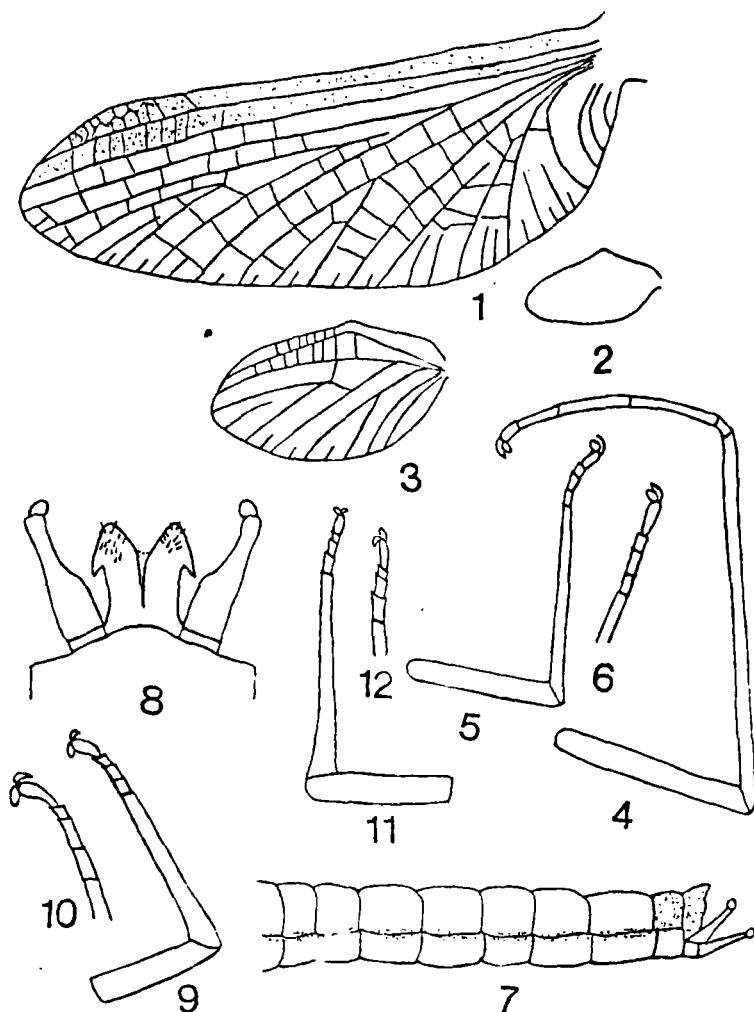
1—8 雄成虫

1 前翅;2 后翅;3 后翅放大;4 前足;5 后足;6 后足跗节放大;7 腹部侧面;8 外生殖器腹面观

9—12 雌成虫

9 前足;10 前足跗节放大;11 后足;12 后足跗节放大

① 本文于 1992 年 12 月 3 日收到。



图版 I

参考文献

- 1 苏翠荣,尤大寿. 小蜉属小蜉亚属二新种. 南京师大学报(自),1988;3:63-67
- 2 Allen, R. K., and G. F. Edmunds, Jr. A revision of the genus *Ephemerella* (Ephemeroptera: Ephemerellidae) V III. The subgenus *Ephemerella* in North America Misc. Pub. Entomol. Soc. Amer. 1965;4:244-282
- 3 Allen, R. K. New Asian *Ephemerella* with notes (Ephemeroptera: *Ephemerella*). Can. Ent. 1971;512-528
- 4 Edmunds, G. F., Jr. Subgeneric groups within the mayfly genus *Ephemerella* (Ephemeroptera: Ephemerellidae). Am. Ent. Soc. Amer. 1959;52:543-547
- 5 Edmunds, G. F., Jr., S. L. Jensen and L. Berner. The mayflies of North and Central

America, University of Minnesota Press, Minneapolis. 1976

## A New Species of Genus *Epemerella*

(Ephemeroptera: Ephemerellidae)

Wu Tian            Gui Hong

(Department of Biology)

**Abstract** This paper describes a new species of mayflies of the genus *Epemerella* from Yixing, Jiangsu Province. The type specimens are deposited in the Department of Biology, Nanjing Normal University.

*Epemerella yixingensis* sp. nov. (figs. 1–12)

Male imago (in alc.): Length of body 5–6 mm, general colour light tan. Compound eyes large and contiguous dorsally. Tubinate eyes pale orange, lower eyes black. Thorax deep tan, fore wing 5.5–6.2 mm, long and hyaline, Sc and R veins rather broad, stigmatic cross veins slightly anastomosed. Leg light tan, length of fore legs almost equal to the body. The ratio of femur:tibia:tarsus = 2.7:4.4:3.5, length of tarsal joints rank 2, 3, 4, 5, 1. All claws dissimilar. Forceps 3 segmented. Penes with 7 dorsal spines and 24 ventral spines. Three caudal filaments, terminal filament slightly longer than the cerci.

Female imago (in alc.): Length of body 5–6.2 mm, general colour same as in male. Length of fore wing 5.5–6.5 mm. In the fore leg, the ratio of femur:tibia:tarsus = 1.8:2.8:1.5, length of tarsal joints rank 4, 1 = 2, 3.

Holotype: ♂, Allotype: ♀, Hufu, 1986 V. 25, Paratypes: 6 ♂♂, 5 ♀♀, Mingling, 1986, VI. 2; ♂♂, 3 ♀♀, Taihua, 1986, VI. 6

**Key words** Ephemeroptera, Ephemerellidae, *Epemerella*, New species.