

Five new species of mayflies from Japan.

New Species of Japanese Ephemerida

(377)

卷六十三第 誌 雜 學 物 動 Dobutsugaku Zasshi,

Tokyo Vol 36:
377-380

日本産蜉蝣新種

(大正十三年八月十日受領)

高橋 雄

此間亦を草するに當り岸田氏より多大の御教導にあつかり、又丸毛博士及木下理學士より色々御指導下されし事を此處に謹んで深謝す。

一、アメフリカゲロウ (新稱) *Clacon naitikonis*, n. sp. (Fig. 3)

雄はアオバカゲロウに非常によく似て居るが雌は翅に少しも色がついて居ないので直ちに彼と區別される。翅の外縁にある間投脈が一對づつあるので、本属の他の多くのものと區別される。銕子はフタバカゲロウに似て居る。

Female (in alcohol)

Eyes black; head and thorax rufo-fuscous. Abdomen in segment 2-7 testaceous, with many marks or spots which are in shape oblong and are rufous of colour, and some of them with outline black; in segment 8 and 9 rufo-fuscous; remain testaceous, also caudal setae and all legs. Wings vitreous, contained two intercarys at the margin, as *Baetis* or *Clacon Jorgenseni*, PETERSON.

Length of body: 4 mm.

Length of wing: 4.5 mm.

Loc: Shiga: Nagano.

Time of appearance: August.

二、アオバカゲロウ *Clacon Okamotoi*, n. sp. (Fig. 1 and 2)

本種は岡本博士が岡崎氏の爲に新種として査定せし *Clacon femoralis*, OKAMOTO ならんと思ひしも記載なき爲同定するを得ず、こゝに新種として擧げたり。

雌の前翅の前縁が綠色なる故容易に前記の種類及フタバカゲロウと區別さる。大きさはフタバカゲロウとアメフリカゲロウの中間にあり。

銕子はアメフリカゲロウに極めてよく似たり。

Male (in alcohol)

Turbinate eyes redish orange, basal eyes black. Head and thorax brownish yellow; legs tinted yellow slightly; wings vitreous. Abdominal segment 2-7 translucent; segment 8-10 cretaceous; and these dorsum red, except segment 10. Forceps translucent, but basal segment cretaceous. Caudal setae colourless, with joinings red.

Length of body: 4.5 mm.

Length of wing: 4.5 mm.

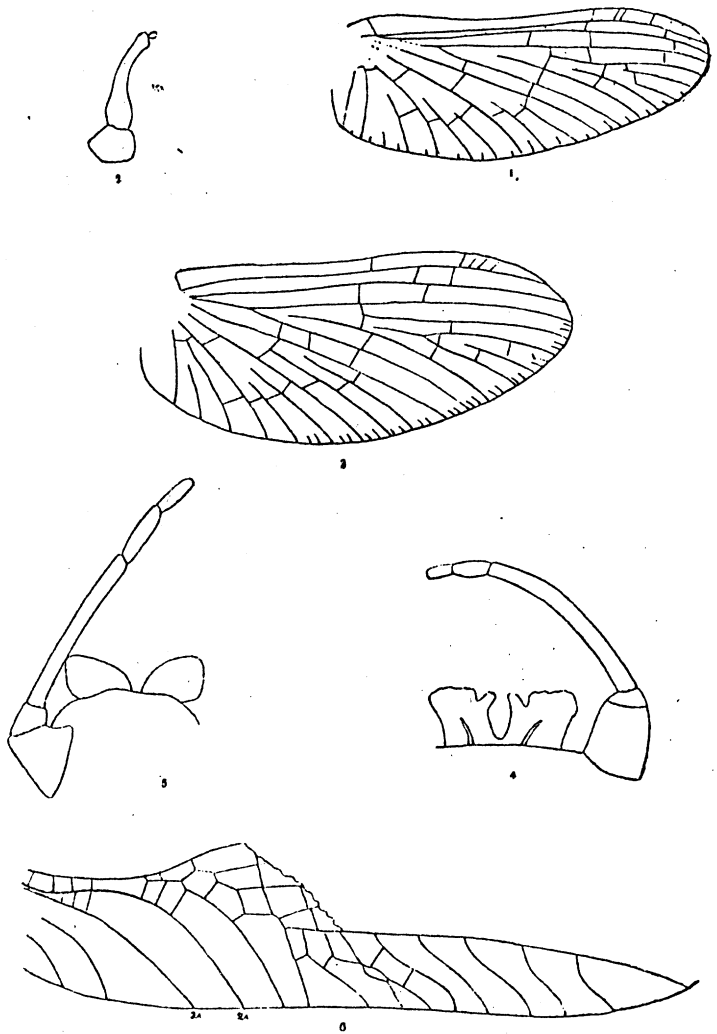


Fig. 1. Wing of *Cleon Okamotoi*, ♂.
 „ 2. Forecep of *Cleon Okamotoi*, ♂.
 „ 3. Wing of *Cleon miikon's*, ♂.
 „ 4. Penis and Forecep of *Ecdyurus yoshiadae*, ♂.
 „ 5. Penis and Forecep of *Epeorus ikononis*, ♂.
 „ 6. Part of Forewing of *Poly nitarsis shigae*, ♂.

Length of caudal seta : 11 mm.

Loc. : Tokyo ; Kanazawa ; Shanuki ; Okayama.

Time of appearance : July to September.

三' シロイロカゲロウ (新稱) *Polymitaris shigaæ*, n. sp. (Fig. 6)

雌雄よく相似たり。雌は複眼黒色、體及脚白色、但し前脚の腿節、經節、附節及胸、腹脊は赤褐色、尾毛は白色なり。

Male (dried)

Eyes black ; head and prothorax greyish testaceous, meta- and mesothorax fuscous, Abdomen testaceous, caudal setae white, with joinings grey. In the fore legs femer testaceous, the upper side of terminal edge redish black ; tibiae testaceous, with many spots redish black, meso- and metathoracic legs testaceous.

Length of body : 9 mm.

Length of forewing : 9 mm.

Loc. : Shiga, Shanuki.

Time of appearance : August and September.

四' イカノカゲロウ (新稱) *Ephorus ikanonis*, n. sp. (Fig. 5)

雄、複眼灰青色、胸脊黒褐色、其他褐色、腹關節の後縁に各々黒褐色の横紋あり。翅は畧無色にして脈は褐色なり。

Male (in alcohol)

Eyes cinereous pale. Pronotum piceous, each side redish fuscous. Lateral side of prothorax has a dot yellow ; and mesonotum with a piceous streak in the center and in each side with a oblong dots testaceous. Wings, vitreous, tinted dark yellow slightly, and the pterostigmatic space brownish black. All legs piceous. Abdominal segment testaceous, with piceous joinings, lateral suture yellow : Forceps and caudal setae piceous.

Length of body, 13.5 mm.

Length of forewing : 14 mm.

Length of post wing: 5 mm.

Length of caudal seta: 37 mm.

Loc. Shanuki.

Time of appearance: March.

五 アマゴヒカゲロウ (新稱) *Ecdynurus yoshidac*, n. sp. (Fig. 4)

雌、雄よく似て居るが、複眼は雄は大にして雌は比較的小にて共に灰色なり。翅は無色にして、雌の前縁は緑色、體は綠黄色、雄の腹部二—七關節は半透明、雌の胸腹脊は褐色なり。

Female (living)

Compound eyes intermediate darkish brown, and is marked at the tip two short red dash; at the side greenish yellow, with three rings piceous.

Oculi colourless, the bottom is in colour black. Antenna apical segment grey, subtranslucent, the other two segments deep brown.

Head greenish yellow, vertex darkish brown. Prothorax greenish yellow, notum narrow tinted darkish brown: meso- and metathorax greenish yellow, notum darkish brown.

Abdomen in the segment 1-9 greenish yellow, and dorsum tinted brown, and the lateral sides have twig shaped marks which are in colour black, and ventral more greenish yellow of colour: of every segments with narrow black band at the segment. Last abdominal segment greenish yellow.

Tarsus and claws grey, Femer yellowish grey, the other parts of legs greenish yellow. Wings vitreous, costal and radi us space tinted green. Caudal setae greenish grey, without colour rings.

Length of body: 10 mm.

Length of fore wing: 11 mm.

Length of post wing: 4 mm.

Length of caudal setae: 19 mm.

Loc. Shanuki, Shiga, Fukushima.

Time of appearance, June to August.