

Kontyû, 33 (2) : 218-220. 1965

## DESCRIPTION OF TWO NEW SPECIES OF BAETIDAE FROM JAPAN (Ephemeroptera)

By Kyuemon Gose

*Gojo High-school, Gojo, Nara Prefecture*

The present article deals with the description of two new species of Ephemeroptera from Japan: one belongs to the genus *Baetiella*, and the other to *Baetis*.

I wish to express my sincere thanks to Prof. M. Tsuda of Nara Women's University for his guidance during the present study.

### ***Baetis yamatoensis* sp. nov.**

Male: Length of body 5.5 mm., of fore wing 5.2 mm (Fig. 1). Head yellow-brown, antennae brown. Ocelli white; compound eyes light red-brown, extremely large (Fig. 3).

Thorax yellow-brown, lighter along dorsal sutures and at apex of mesoscutellum; wings hyaline, apical part of costal and subcostal area with weakly brownish amber-colour, veins light brownish; hind wing with three longitudinal veins, the third longitudinal vein terminated at the middle of the hind margin, costal projection tinted with brown (Fig. 2).

Abdominal segments 1-6 semihyaline, whitish or slightly tinted with pale yellow; segments 7-10 brownish; each of tergites 1-8 with a brownish band on its posterior margin; each of the tergites 7-9 with three pale yellow stripe-like markings.

Genital forceps white, basal joint of the forceps with a weakly developed tubercle on its inner apical margin (Fig. 4).

Female: Unknown.

Holotype: ♂, Gojo-shi, Nara Pref., 20.VII.1963, K. Gose leg. Paratypes: 5 ♂♂, Yoshino-gawa, Nara Pref., 20.VII.1963, K. Gose leg. Specimens are deposited in Zoological Institute, Nara Women's University.

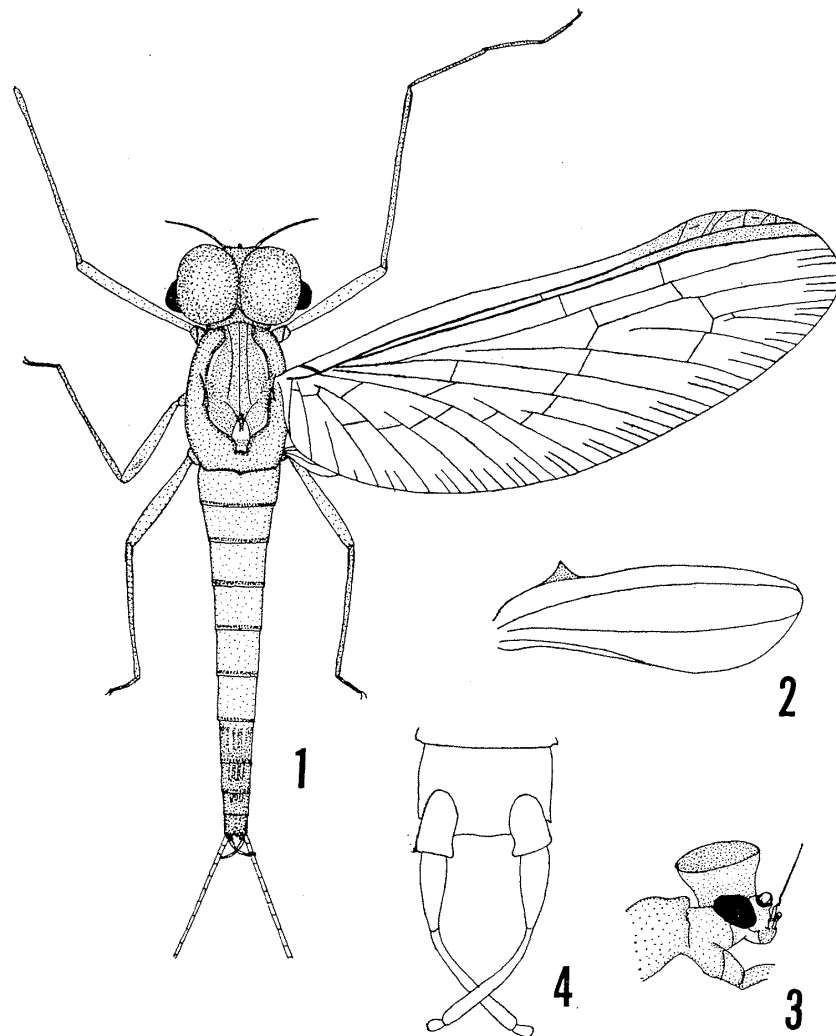
Remarks: This species is similar to *Baetis thermicus* Uéno, but differs from it in the venation of the hind wing and the presence of three pale yellow stripe-like markings on the 7-9 segments.

### ***Baetiella noseawaensis* sp. nov.**

Male: Length of body 5.2 mm., of fore wing 4.2 mm. (Fig. 5). Head yellow-brown, antennae brownish. Ocelli brownish; compound eyes light red-brown, extremely large (Fig. 6).

Thorax light brown; near the outer margin of the dorsal side of thorax, there are dark curved line-like markings. Legs whitish, distal parts of each segment brownish, claws brownish. Two claws are dissimilar in form in all legs (Fig. 7).

Wings hyaline, pterostigmatic portion obscured. Veins pale brownish, cross veins brownish with thickness (Fig. 5). Hind wing absent.



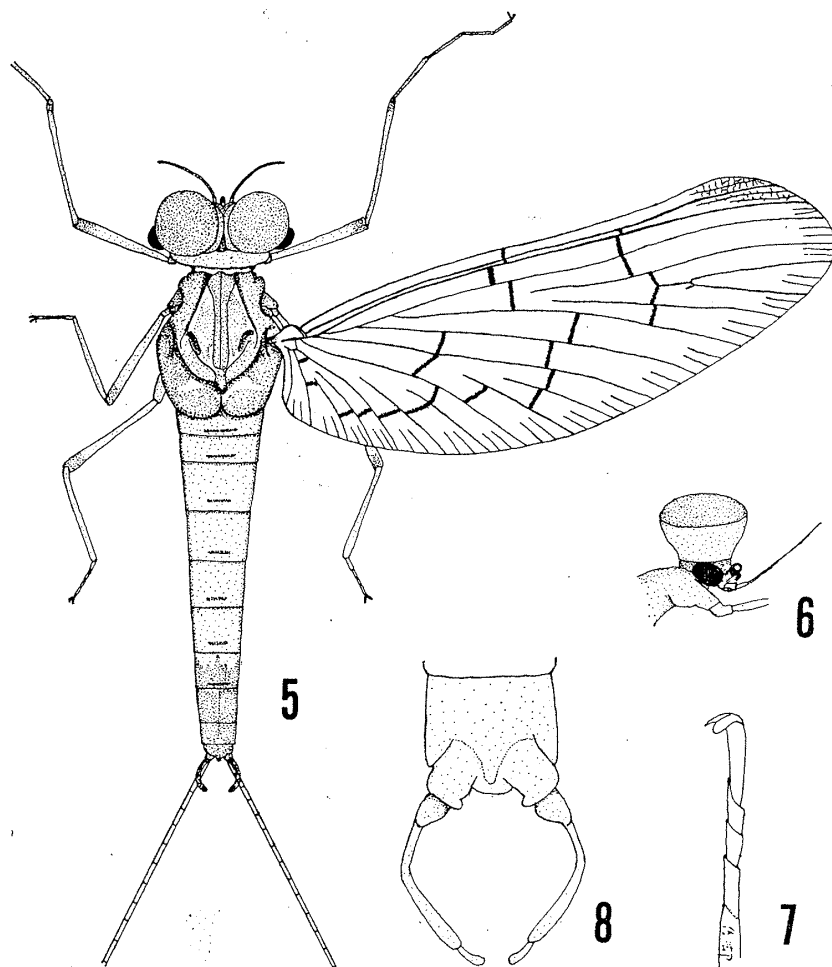
Figs. 1-4. *Baetis yamatoensis* sp. nov. 1. Entire, dorsal aspect. 2. Hind-wing. 3. Head, lateral view. 4. End of abdomen, ventral view.

Abdominal segments 1-6 semihyaline, whitish; segments 7-10 yellowish white; each of the tergites 1-7 with a brownish band near its posterior margin. Ventral side pale yellowish white. Forceps pale, arched, basal segment of the forceps with a tubercle on its inner apical margin (Fig. 8).

Female: Unknown.

Holotype: ♂, Ômata, Nosegawa, Nara Pref., 3. VIII. 1956, K. Gose leg. Paratypes: 7 ♂♂, Kawarabi-gawa, Nara Pref., 3. VIII. 1956, K. Gose leg. Specimens are deposited in Zoological Institute, Nara Women's University.

Remarks: This species resembles closely to *Baetiella japonica* Imanishi, but it differs from this in following characteristics: Each cross vein is thicker than in *Baetiella japonica*. Forceps arched, its basal segment with a tubercle on its inner



Figs. 5-8. *Baetiella nose-gawaensis* sp. nov. 5. Entire, dorsal aspect. 6. Head, lateral view. 7. Hind-tarsus. 8. End of abdomen, ventral view.

apical margin.

#### Literature

- Imanishi, Kinji (1937). Mayflies from Japanese torrents. VIII. Notes on the genera *Paealeptophlebia* and *Baetis*. Annot. Zool. Japon., 16, 4, p. 330-337.
- Uéno, Masuzo (1931). Einige neue Ephemeropteren und Plekopteren aus Mittel-Japan. Annot. Zool. Japon., 13, 2, p. 91-99.
- (1931). Contribution to the knowledge of Japanese Ephemeroptera. Annot. Zool. Japon., 13, 2, p. 189-231.