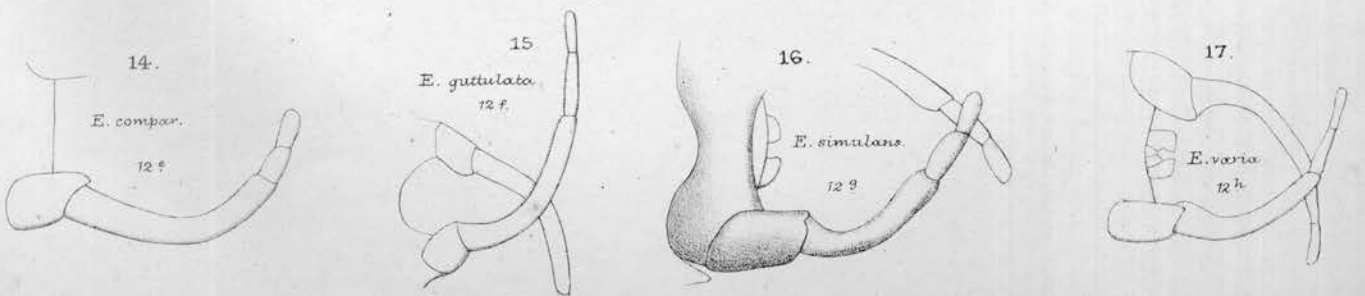


A.T. Hollicek del. et lith.

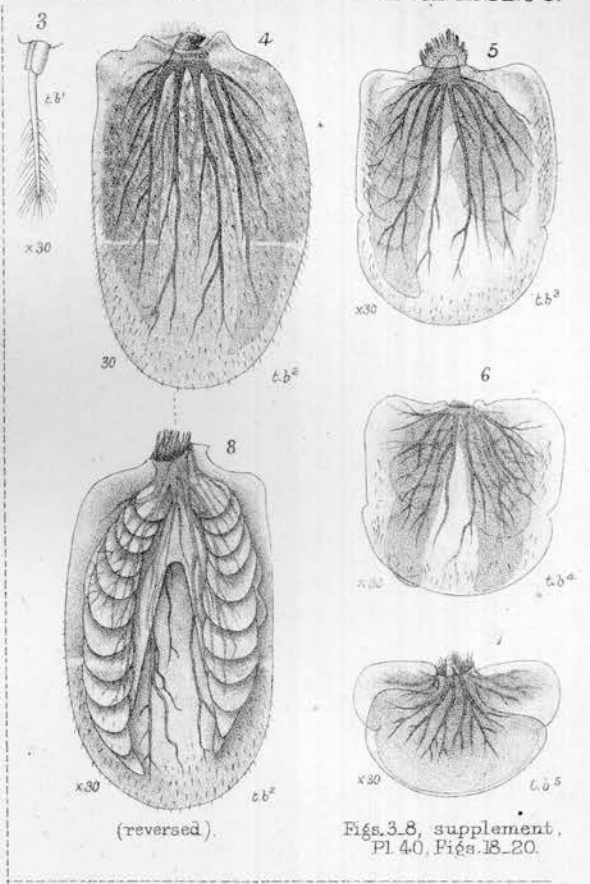
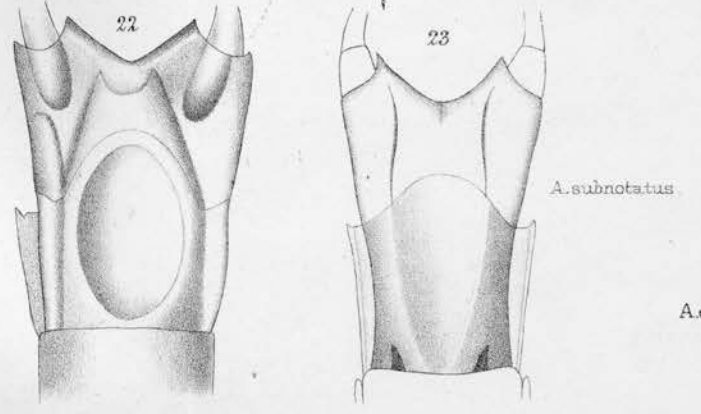
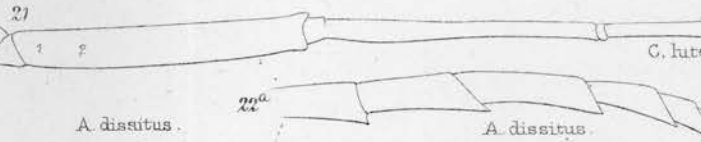
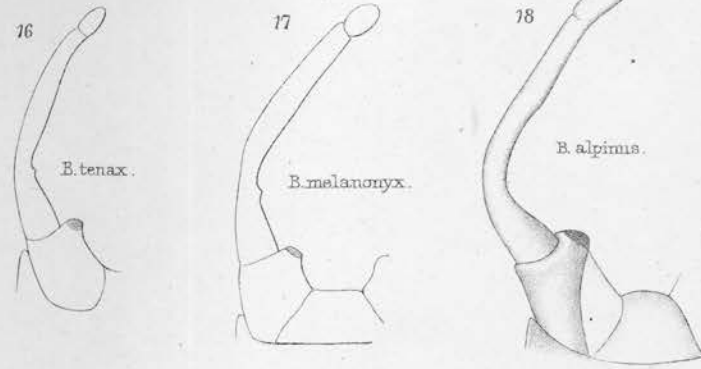
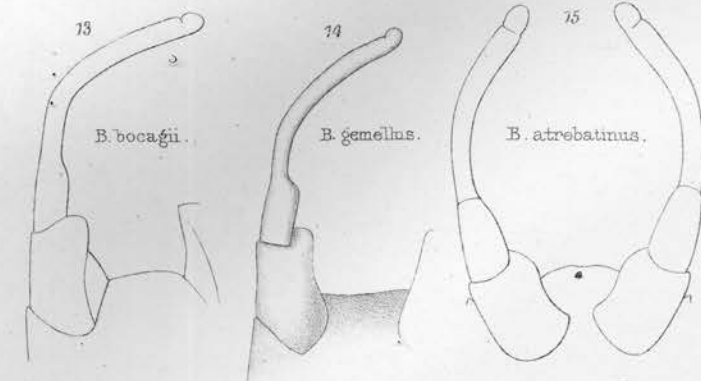
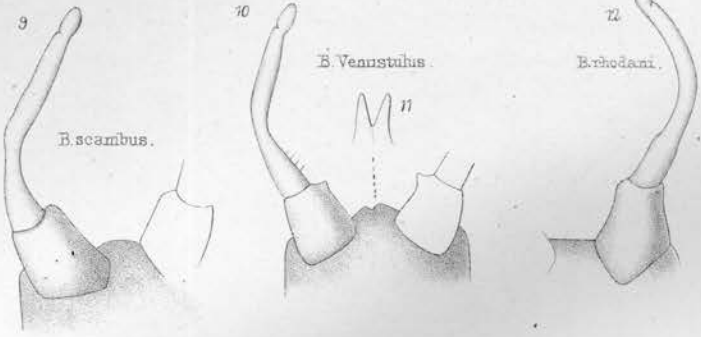
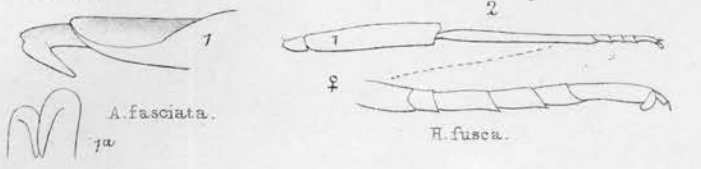
Figs. 1-13 are Supplementary to Pl. 29.



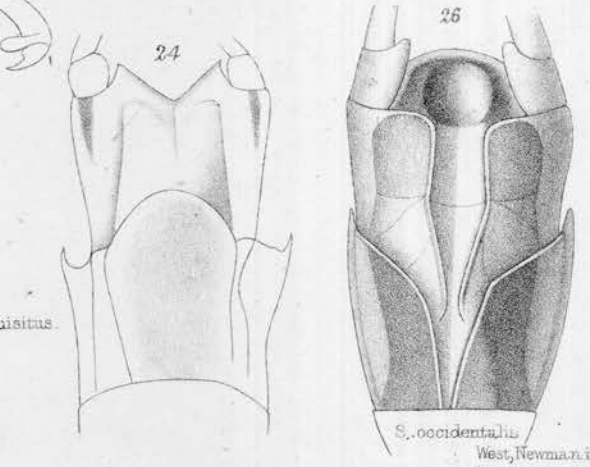
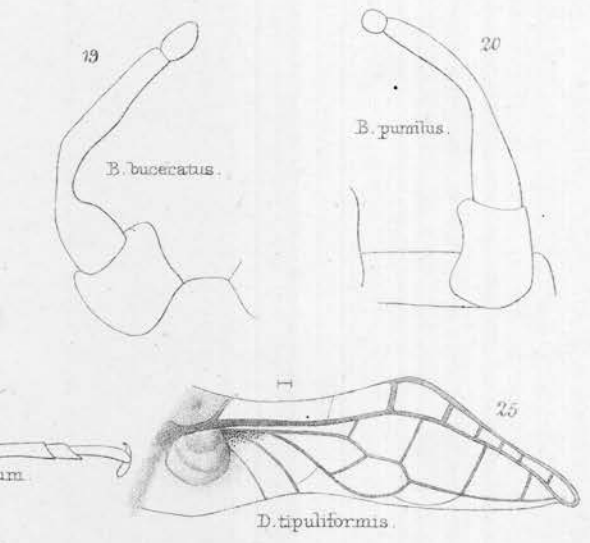
A.E. Eaton del. A.T.H. lith.

1-13. HEXAGENIA. (Nymph) 14-17. EPHEMERA. (Adult & forceps.)

West, Newman & Co imp.



Figs. 3-8, supplement, Pl. 40, Figs. 18-20.

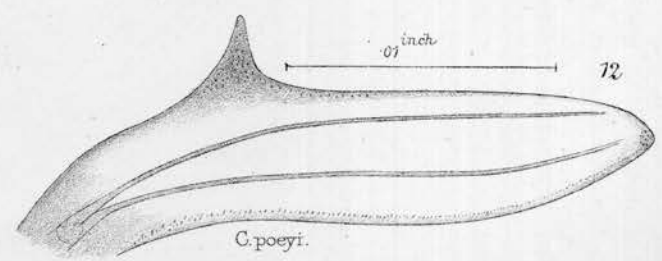
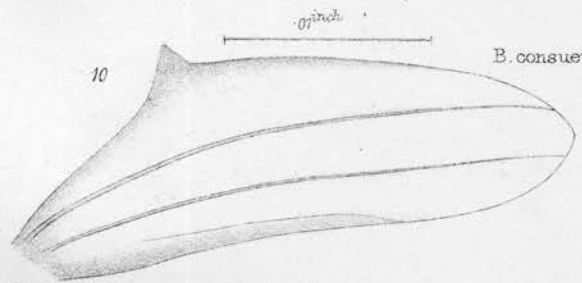
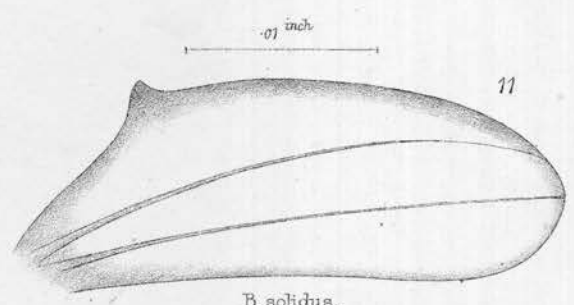
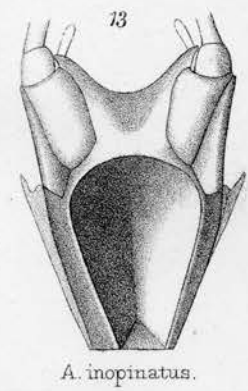
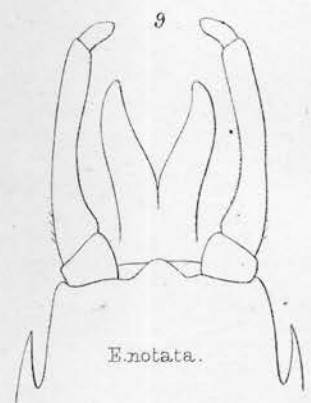
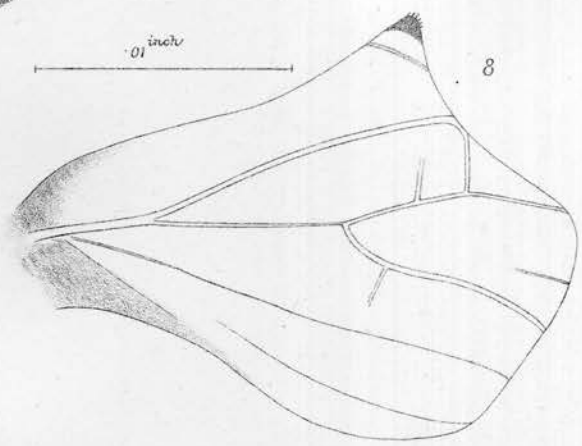
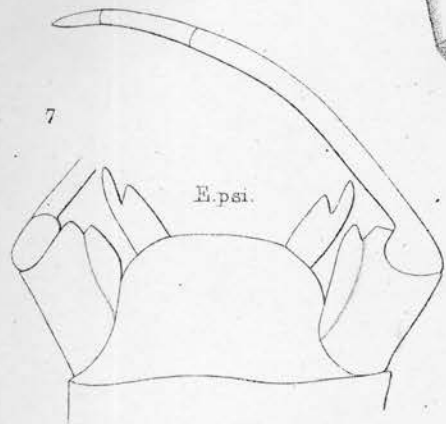
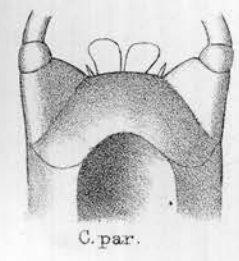
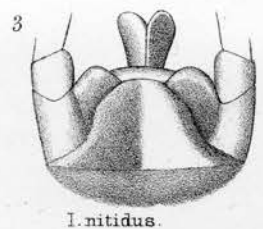
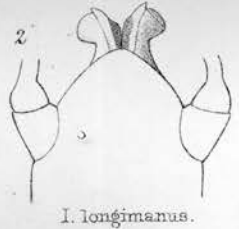
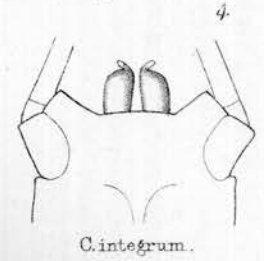
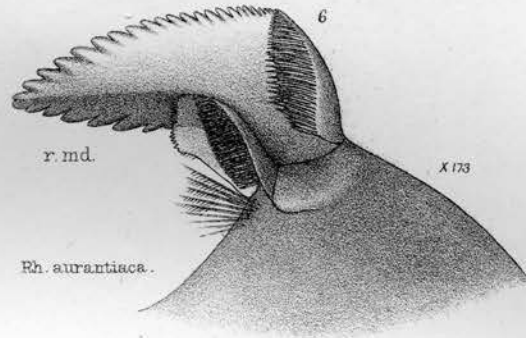
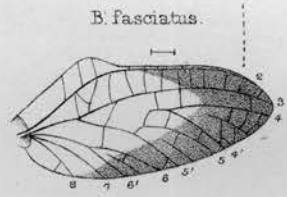
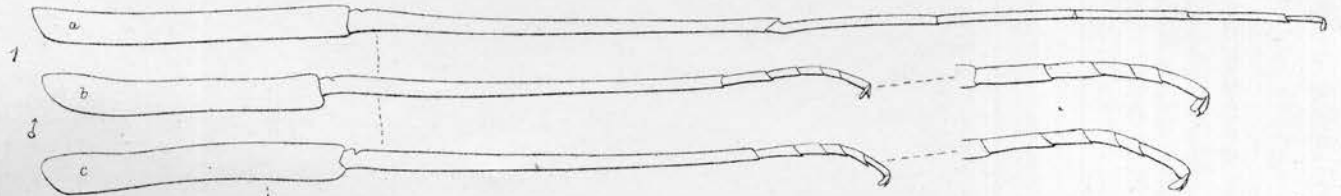


A.E. Eaton del.

Hollick lith.

West, Newman, imp.

1, ATALOPHLEBIA. 2, HABROPHLEBIA. 3-8, Nameless (Nymph). 9-20, BAETIS. 21, CENTROPTILUM. 22-24, AMELETUS. 25, DIPTEROMIMUS. 26, SIPHLURUS.



A. E. Eaton del.

Hollick lith.

West, Newman imp

1, BLEPTUS. 2-3, IRON. 4-5, CINYGMA. 6, RHITHROGENA (Nymph). 7, EPEORUS.
 8, Nameless. 9, EPHEMERELLA. 10-11, BAETIS. 12, CENTROPTILUM. 13, AMELETUS.