

*TORRENTICOLE INSECTS OF THE HIMALAYA

III. DESCRIPTIONS OF TWO NEW SPECIES OF EPHEMERIDA FROM THE NORTHWEST HIMALAYA

By O. P. Dubey

CSIR Research Fellow, School of Entomology,
St. John's College, Agra, India

ABSTRACT. *Baetis seragrui* and *Thraulodes marhies* are described as new from N.W. Himalaya.

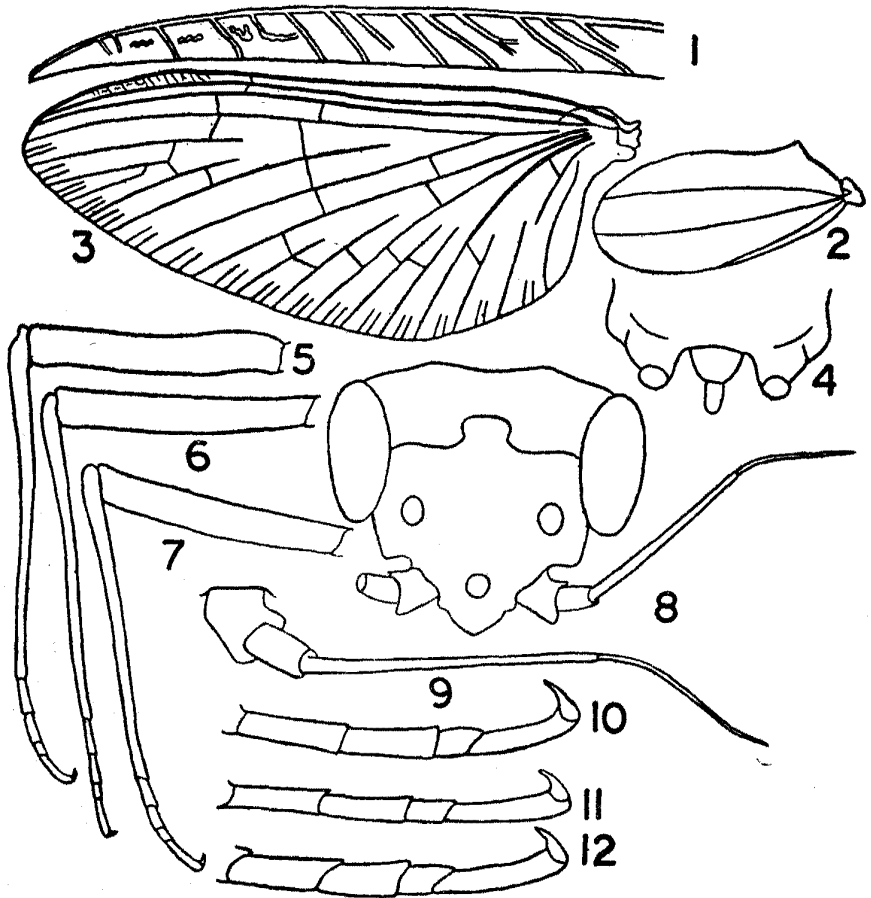
FAMILY BAETIDAE

1. *Baetis seragrui*, sp. nov. (Figs. 1-12)

Female imago: Length excluding terminal filament 12 mm. General colour of the body dark brown. Head and thorax dark brown. Head (Fig. 8) viewed in front broadly oval, height to width 6:7, turban eyes absent. Ocelli white. Antennae (Fig. 9), yellowish-brown, antennae to head length 8:5; four-segmented; first segment stout, as long as thick; second segment stout, as long as thick; second segment cylindrical, subequal to first and about one and half as long as thick; third segment more slender, about 5.7 times the second; terminal segment two-thirds the preceding. Thorax dark brown, without any markings on it. Legs (Figs. 5,6,7) yellow, slender, elongate, all femora subequal; all tibiae one and half times the femur; tarsus one-third the tibia. Claws similar. Ratio of fore (Fig. 10) and mid tarsal (Fig. 11) segments 5:4:2:6. Ratio of hind tarsal (Fig. 12) segments 4:3:2:6; Fore wing 12×5 mm, hyaline, veins brown, venation as in (Fig. 3), stigmatic area (Fig. 1) with eight complete and six incomplete cross-veins; intercalary veins paired. Hind wing (Fig. 2) 3×1 mm, hyaline, costal process acute, veins brown, three longitudinal veins; first and second parallel, third vein reaching margin nearly in the middle of wing; cross-veins absent. Abdomen yellowish-brown, 6 mm long. Cerci 30 mm, nearly 2.5 times the body and five times the abdomen. Ovipositor (Fig. 4) yellowish-brown, two-segmented, first segment wider basally than apically, width one and half times its length, second oval, nearly equal to first.

Holotype ♀, dissected on slide, Coll. No. 953/56, N. W. Himalaya : Seragru Icefall: Kultinal, 3600 m, Great Himalayan Range, Sta. No. 49, Coll.

*Contribution No. 176 from the School of Entomology ; CSIR sponsored Scheme for Research on Torrential Stream Insects of the Himalaya under Prof. M. S. Mani.

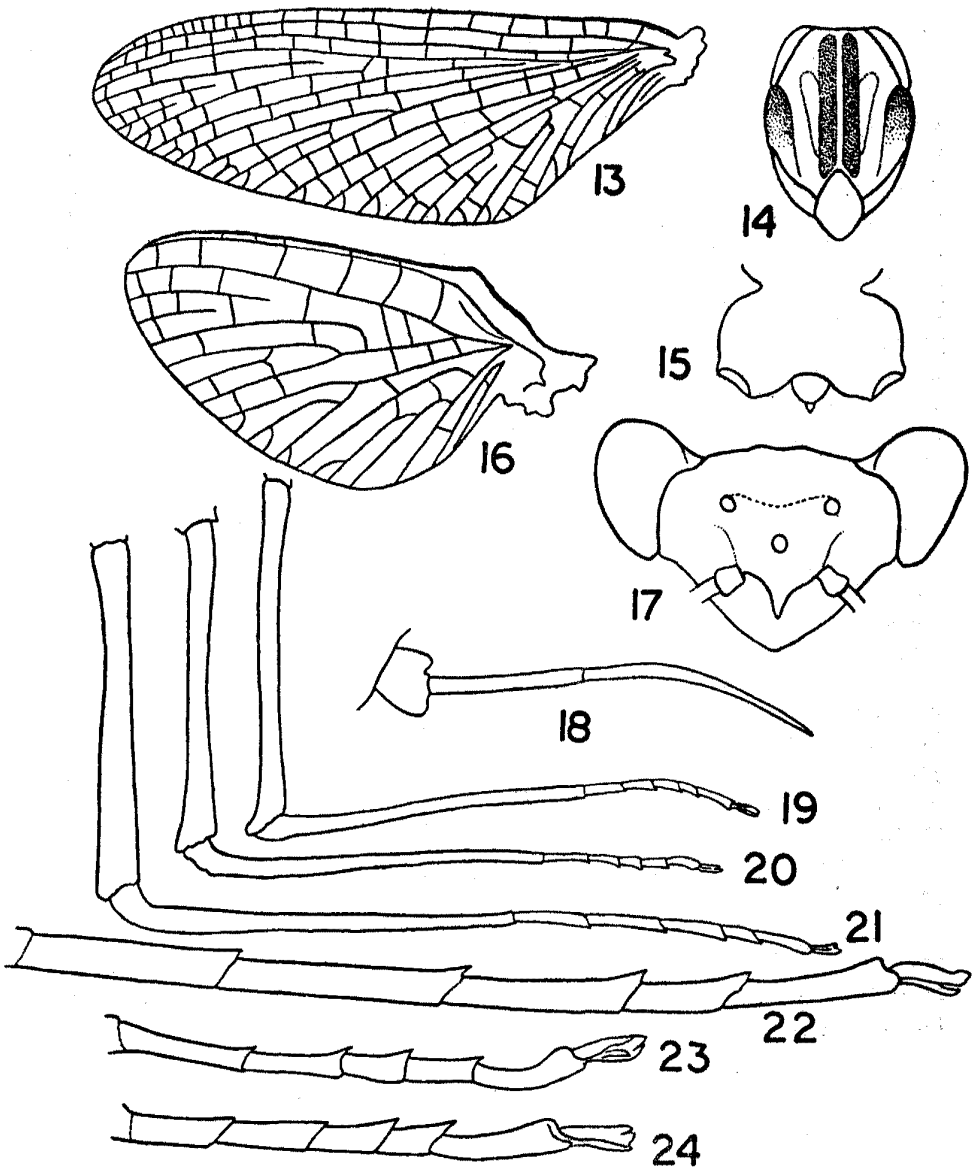


Figs. 1-12. *Baetis seragrui*, sp. nov. ♀ : 1, stigmatic area; 2, hind wing; 3, fore wing; 4, ovipositor; 5, fore leg; 6, middle leg; 7, hind leg; 8, head; 9, antenna; 10, fore tarsus; 11, middle tarsus; 12, hind tarsus.

Santokh Singh, 6.vi.1956.

This new species differs from *Baetis longistylis* Kaul & Dubey¹ in the relatively longer cerci, smaller antenna to head ratio, the first and second antennal segments being subequal, and the terminal being two-thirds the third; and the relatively longer hind wing.

(1) Kaul, B. K. & O. P. Dubey *Oriental Ins.*, 4 (1) : 143



Figs. 13-24. *Thraulodes marhicus*, sp. nov. ♀: 13, fore wing; 14, thorax; 15, ovipositor; 16, hind wing; 17, head; 18, antenna; 19, hind leg; 20, middle leg; 21, fore leg; 22, fore tarsus; 23, middle tarsus; 24, hind tarsus.

FAMILY LEPTOPHLEBIIDAE

2. *Thraulodes marhieus*, sp. nov. (Figs. 13-24)

Female imago : Length, excluding cerci and terminal filaments, 9.5 mm; general colour yellowish-brown, head and thorax dark brown. Head (Fig. 17) viewed in front transverse, height to width 1:2, turban eyes absent. Ventral eyes black, oval, separated above by a distance about three times their own diameter. Ocelli brown. Antennae (Fig. 18) yellowish-brown, antennal length to head length 4 : 5; antenna three-segmented; first segment stout, about three-fourths as long as thick; second segment cylindrical, its length thrice the first; third segment one and half times the preceding. Thorax (Fig. 14) dark brown; with a pair of submedian longitudinal black stripes as in figure. Legs yellowish-brown, slender, elongate. Fore leg (Fig. 21) distinctly longer than the rest, with the first tarsal segment immovably articulated to the tibia; claws dissimilar. Fore tibia (Fig. 21) slightly longer than femur, tarsus about three-fourths the tibia, tarsal segments (Fig. 22) in the ratio 20 : 20 : 17 : 10 : 15. Middle tibia (Fig. 20) slightly longer than femur, tarsus about half the tibia, ratio of tarsal segments (Fig. 23) 12 : 9 : 6 : 7 : 9. Hind leg (Fig. 19) femur and tibia subequal, proportions of tarsal segments (Fig. 24) 10 : 10 : 7 : 5 : 11. Fore wing (Fig. 13) 12 × 4.5 mm, hyaline, veins dark brown; A_1 separated from A_2 at base, A_2 close to A_3 , A_2 is in the middle between A_1 and A_3 ; no free intercalaries between Cu_2 and A_1 , also none between the long intercalary and Cu_2 , stigmatic area with ten complete cross-veins. Hind wing (Fig. 16) 4 × 3 mm, hyaline, costal process obtusely pointed. Veins brown, M forked. Abdomen yellowish-brown, 5 mm long, caudal cerci 16 mm, nearly one and half times the body and three times the abdomen. Ovipositor (Fig. 15) yellowish-brown, two-segmented, first segment wider basally than apically, length one and one-fourth times its width. Second oval, nearly one-third of the first.

Holotype ♀, mounted on slide, No. 986/56, N. W. Himalaya : Stream near Marhi, Pir Panjal Range 3880 m, Sta. No. 55, Coll. Santokh Singh, 17.vi.1956.

This is the first record of the genus *Thraulodes* Ulmer from India. The new species differs from the other Palaearctic species in the antenna to head ratio being 4 : 5, hind wing being three-fourths as long as wide, and the fore tarsus being three-fourths the tibia.